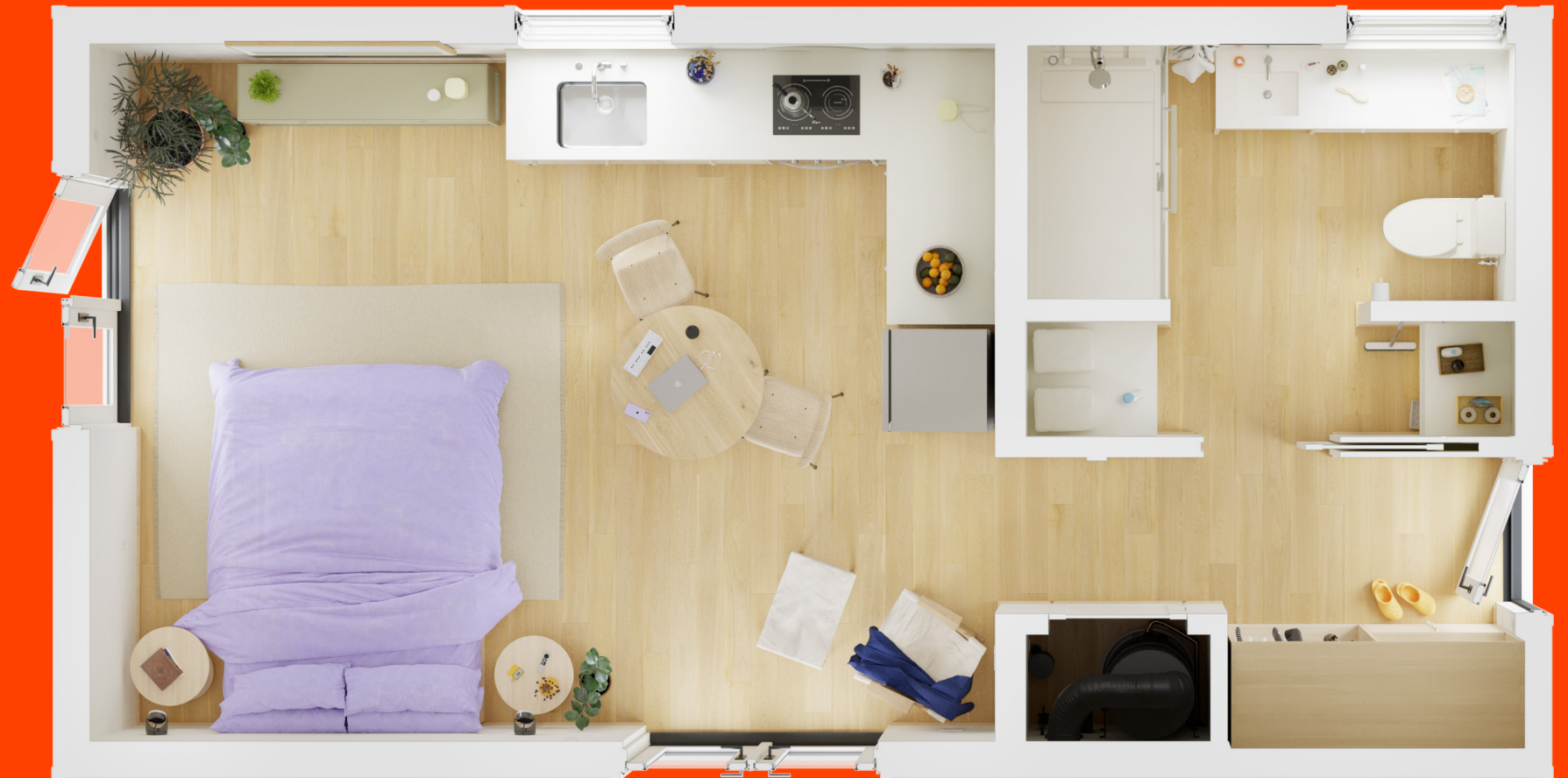


# Backyard dimensioned plans



Samara

# Studio



# Studio

Layout S-01

## Configuration

- Side entry
- Front casement window
- Left side casement window

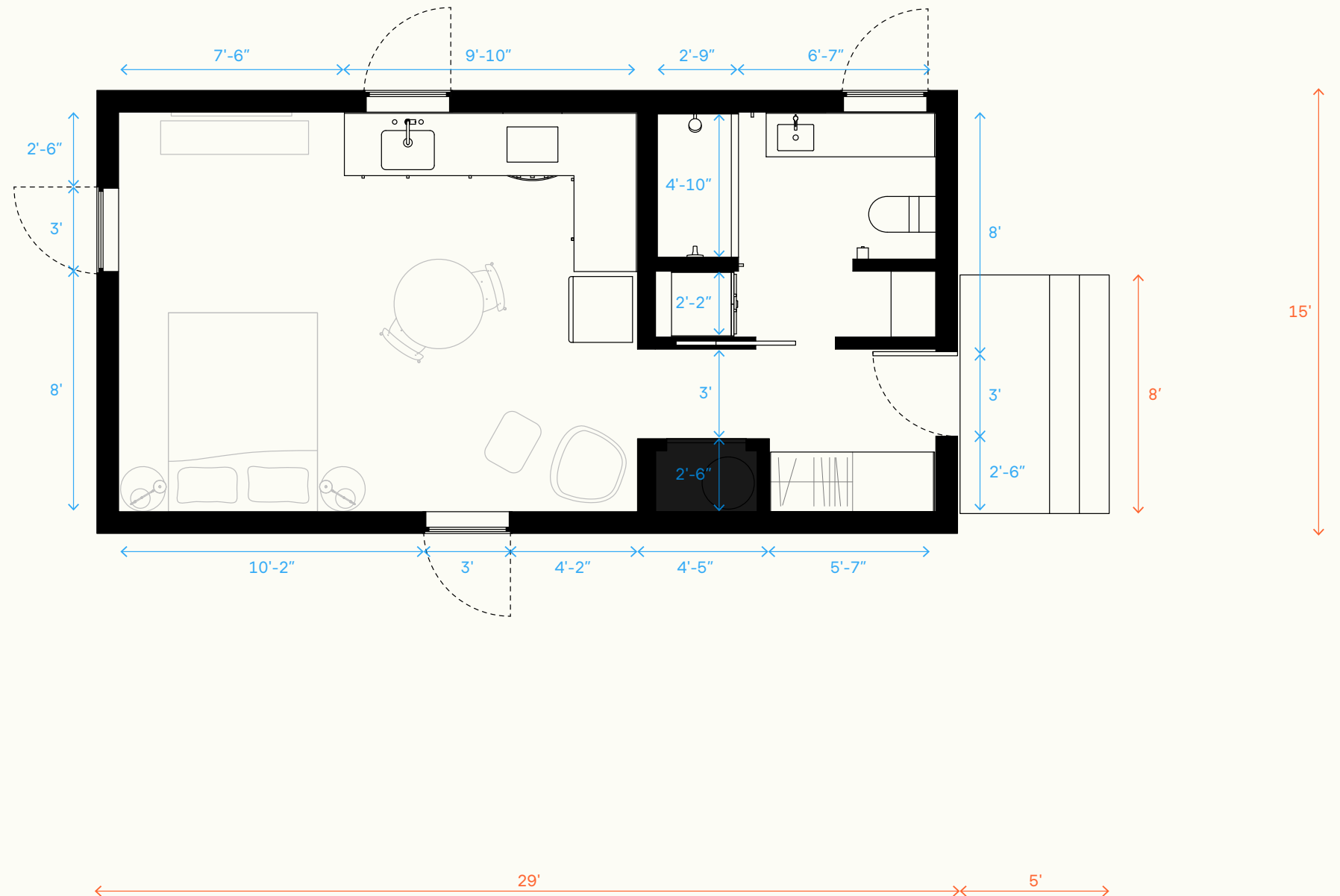
## Exterior dimensions ↔

Total footprint (incl. decks): 34' x 15'  
Minimum lot size: 44' x 25'

## Interior dimensions ↔

Living room: 17'-5" x 13'-6"  
Bathroom: 9'-4" x 7'-6"

Dimensions subject to change  
without notice



# Studio

## Layout S-02

### Configuration

- Side entry
- Front casement window
- Left side double doors and deck

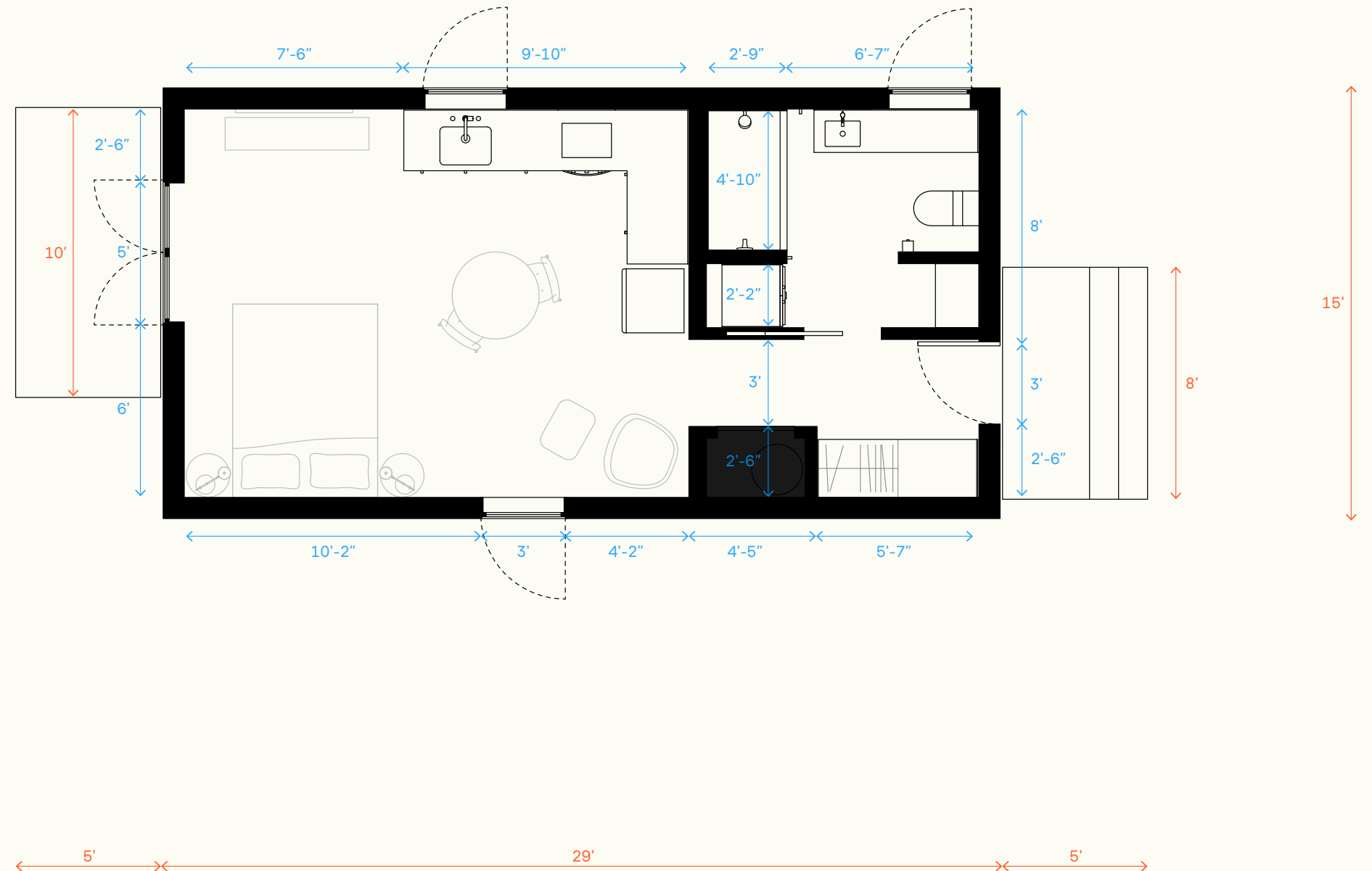
### Exterior dimensions ↔

Total footprint (incl. decks): 39' x 15'  
 Minimum lot size: 49' x 25'

### Interior dimensions ↔

Living room: 17'-5" x 13'-6"  
 Bathroom: 9'-4" x 7'-6"

Dimensions subject to change  
 without notice



# Studio

## Layout S-03

### Configuration

- Side entry
- Front double doors and deck
- Left side casement window

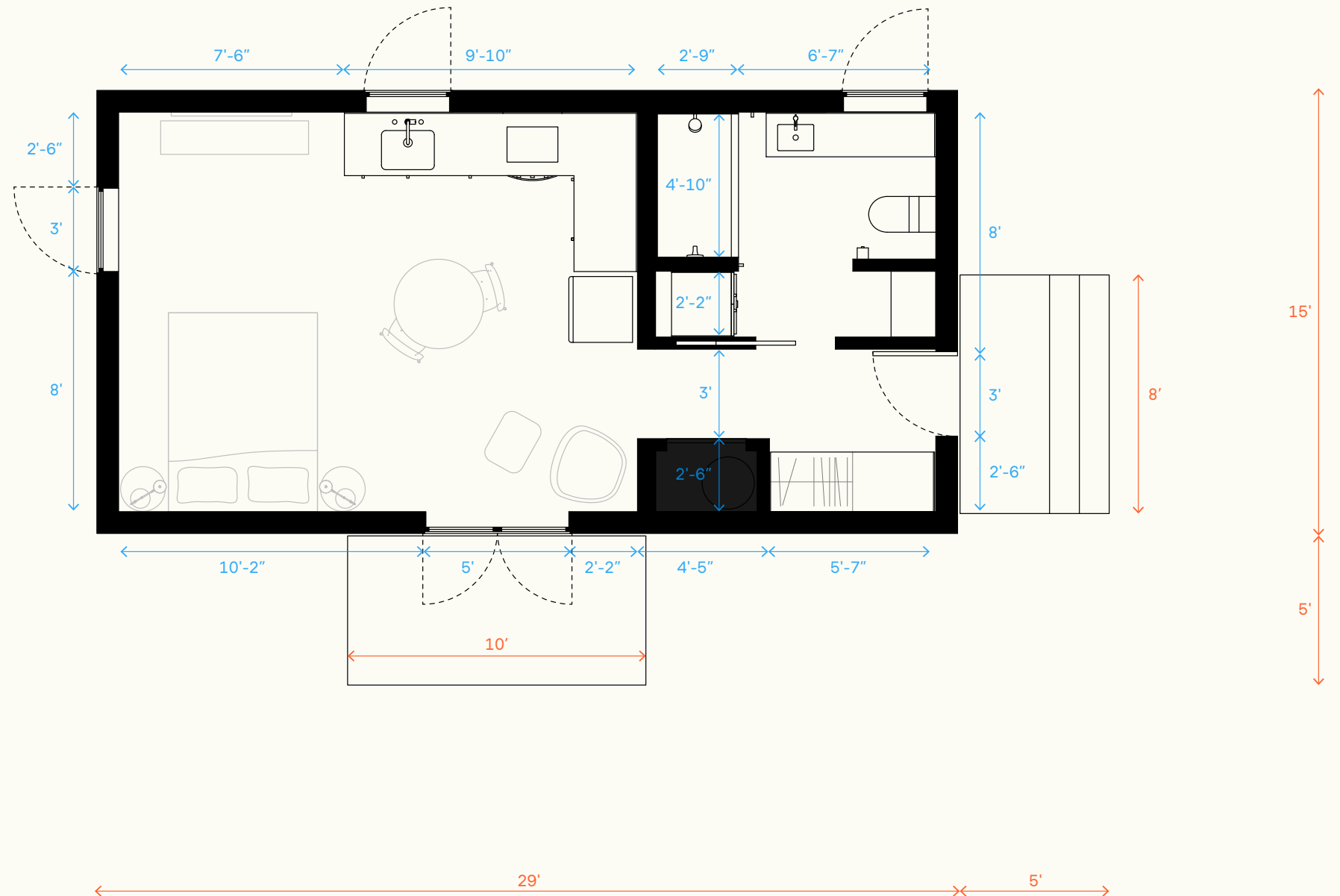
### Exterior dimensions ↔

Total footprint (incl. decks): 34' x 20'  
 Minimum lot size: 44' x 30'

### Interior dimensions ↔

Living room: 17'-5" x 13'-6"  
 Bathroom: 9'-4" x 7'-6"

Dimensions subject to change  
 without notice



# Studio

## Layout S-04

### Configuration

- Side entry
- Front double doors and deck
- Left side double doors and deck

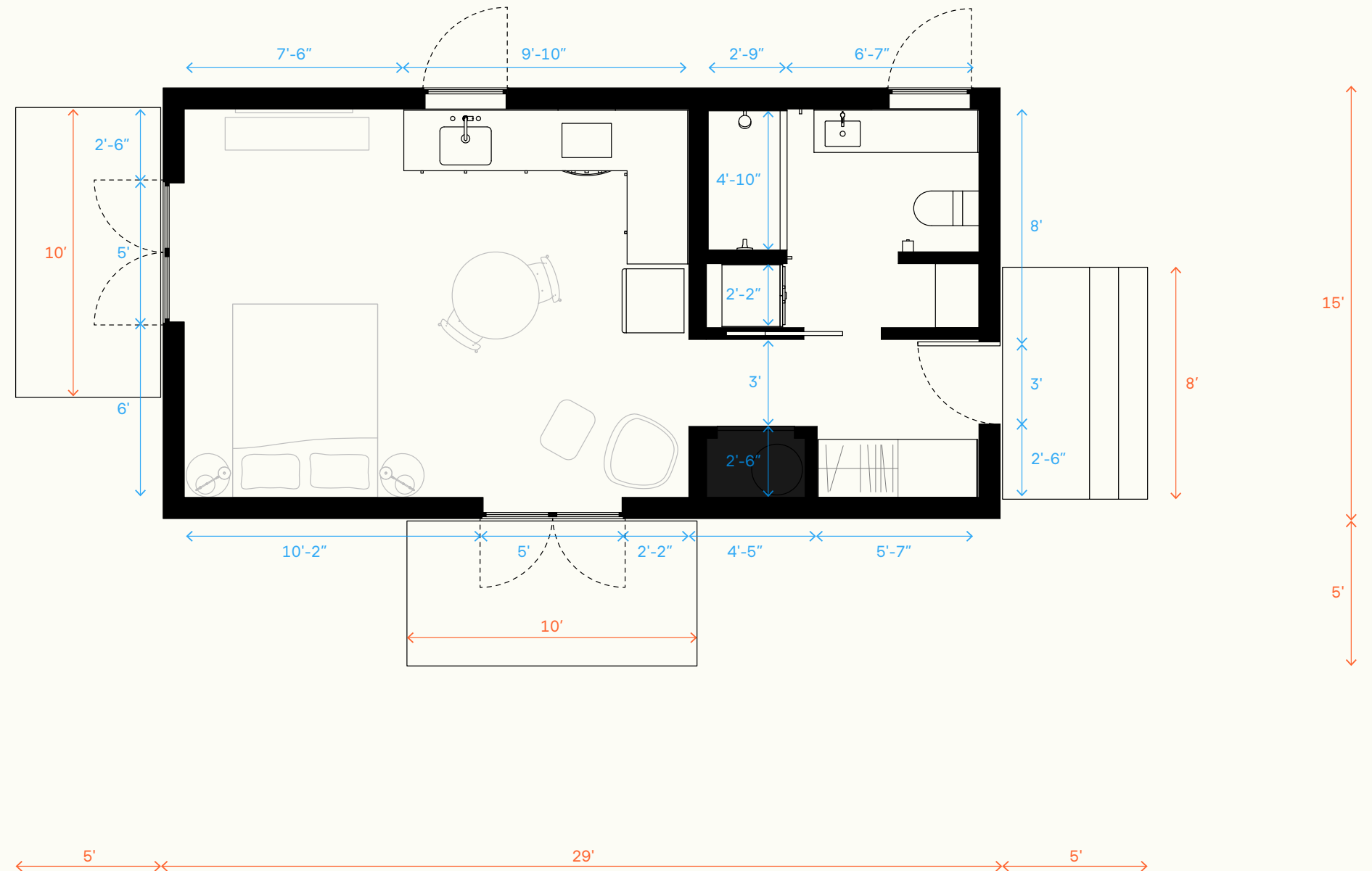
### Exterior dimensions ↔

Total footprint (incl. decks): 39' x 20'  
 Minimum lot size: 49' x 30'

### Interior dimensions ↔

Living room: 17'-5" x 13'-6"  
 Bathroom: 9'-4" x 7'-6"

Dimensions subject to change  
 without notice





# Studio

## Layout S-05

### Configuration

- Front entry
- Left side casement window
- Right side casement window

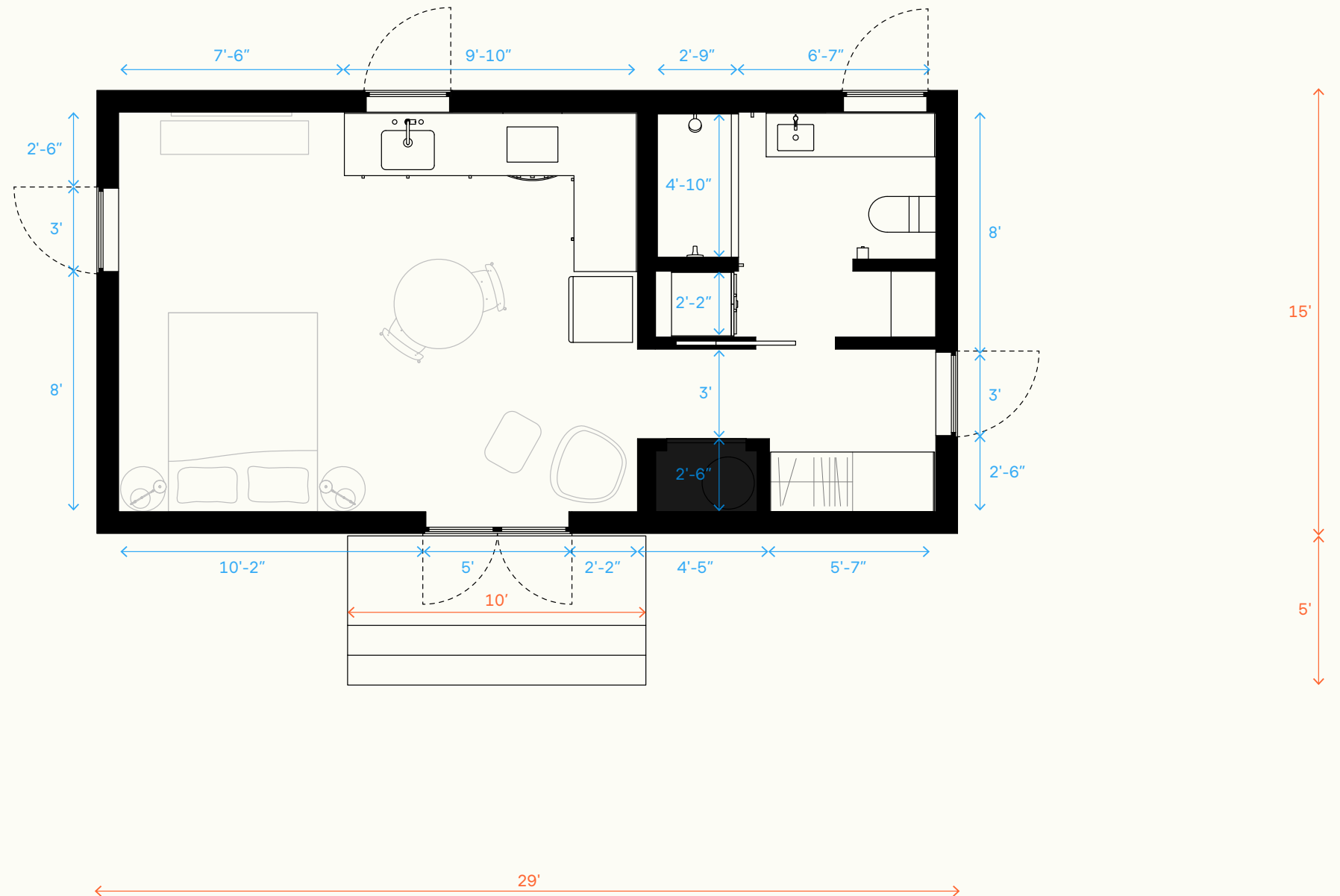
### Exterior dimensions ↔

Total footprint (incl. decks): 29' x 20'  
 Minimum lot size: 39' x 30'

### Interior dimensions ↔

Living room: 17'-5" x 13'-6"  
 Bathroom: 9'-4" x 7'-6"

Dimensions subject to change  
 without notice



# Studio

## Layout S-06

### Configuration

- Front entry
- Left side double doors and deck
- Right side casement window

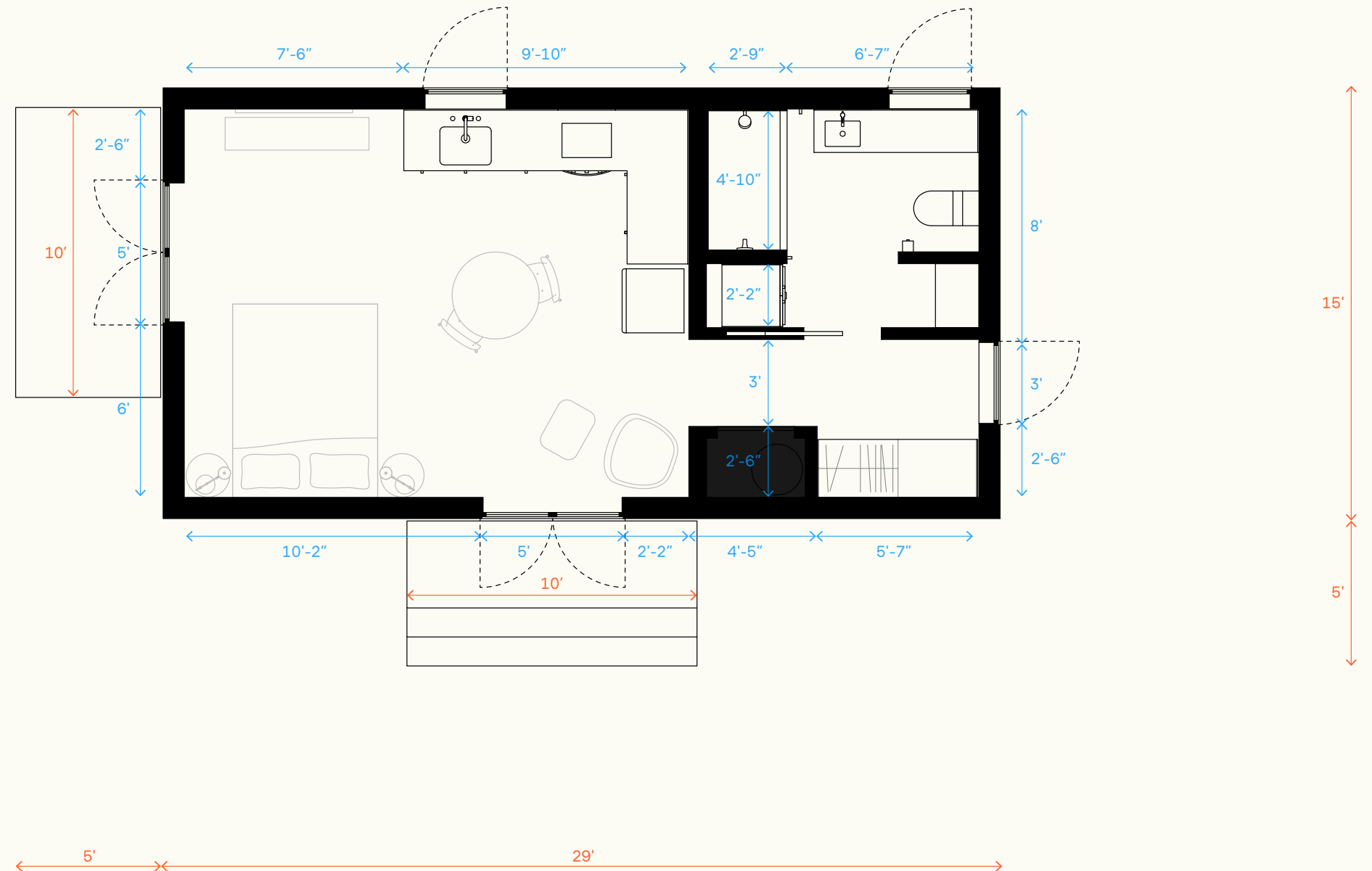
### Exterior dimensions ↔

Total footprint (incl. decks): 34' x 20'  
 Minimum lot size: 44' x 30'

### Interior dimensions ↔

Living room: 17'-5" x 13'-6"  
 Bathroom: 9'-4" x 7'-6"

Dimensions subject to change  
 without notice





# One bedroom



# One bedroom Layout 1B-01

## Configuration

- Front casement window
- Left side casement window

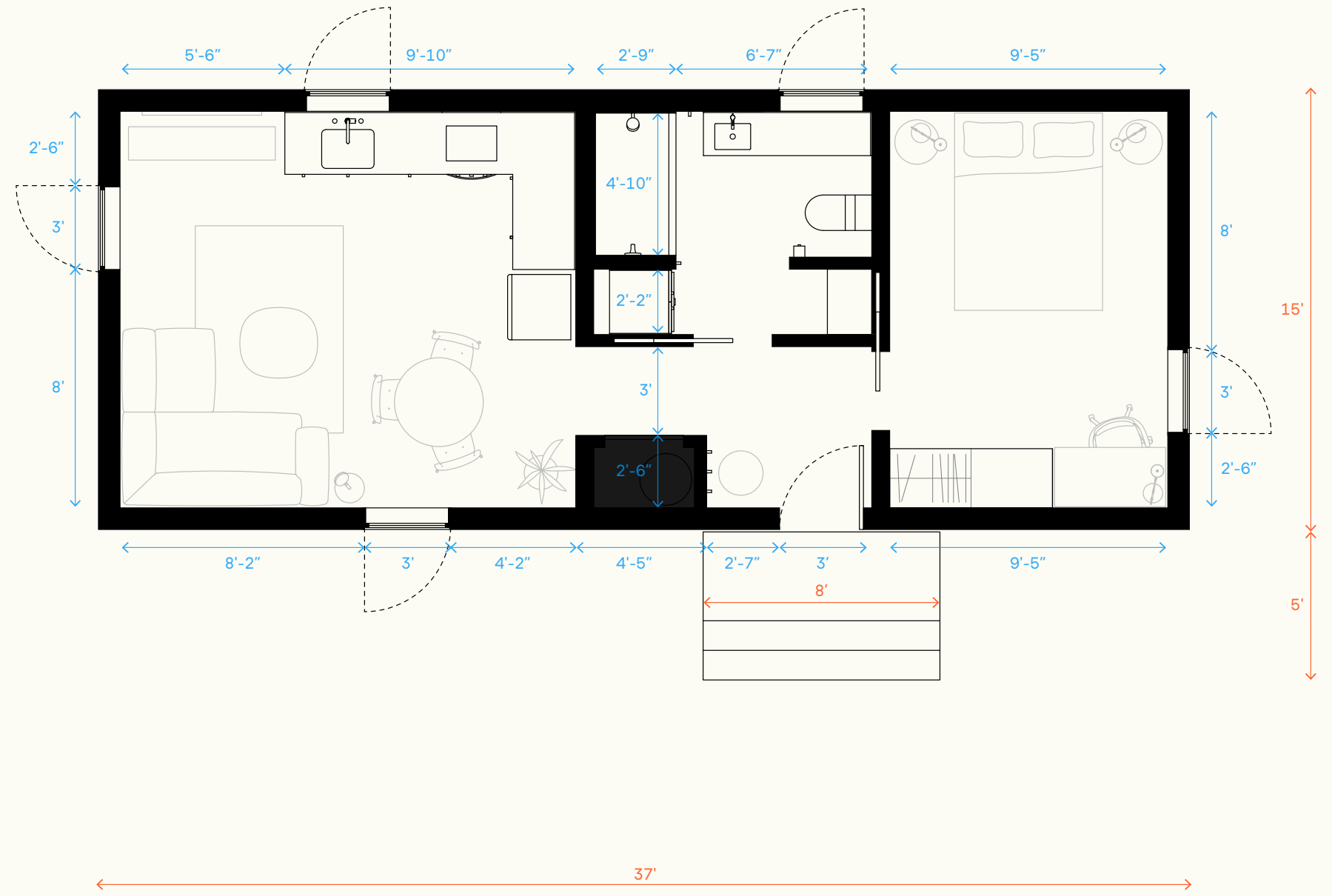
## Exterior dimensions ↔

Total footprint (incl. decks): 37' x 20'  
 Minimum lot size: 47' x 30'

## Interior dimensions ↔

Living room: 15'-5" x 13'-6"  
 Bedroom: 9'-5" x 13'-6"  
 Bathroom: 9'-4" x 7'-6"

Dimensions subject to change without notice



# One bedroom

Layout 1B-02

## Configuration

- Front casement window
- Left side double doors and deck

## Exterior dimensions ↔

Total footprint (incl. decks): 42' x 20'

Minimum lot size: 52' x 30'

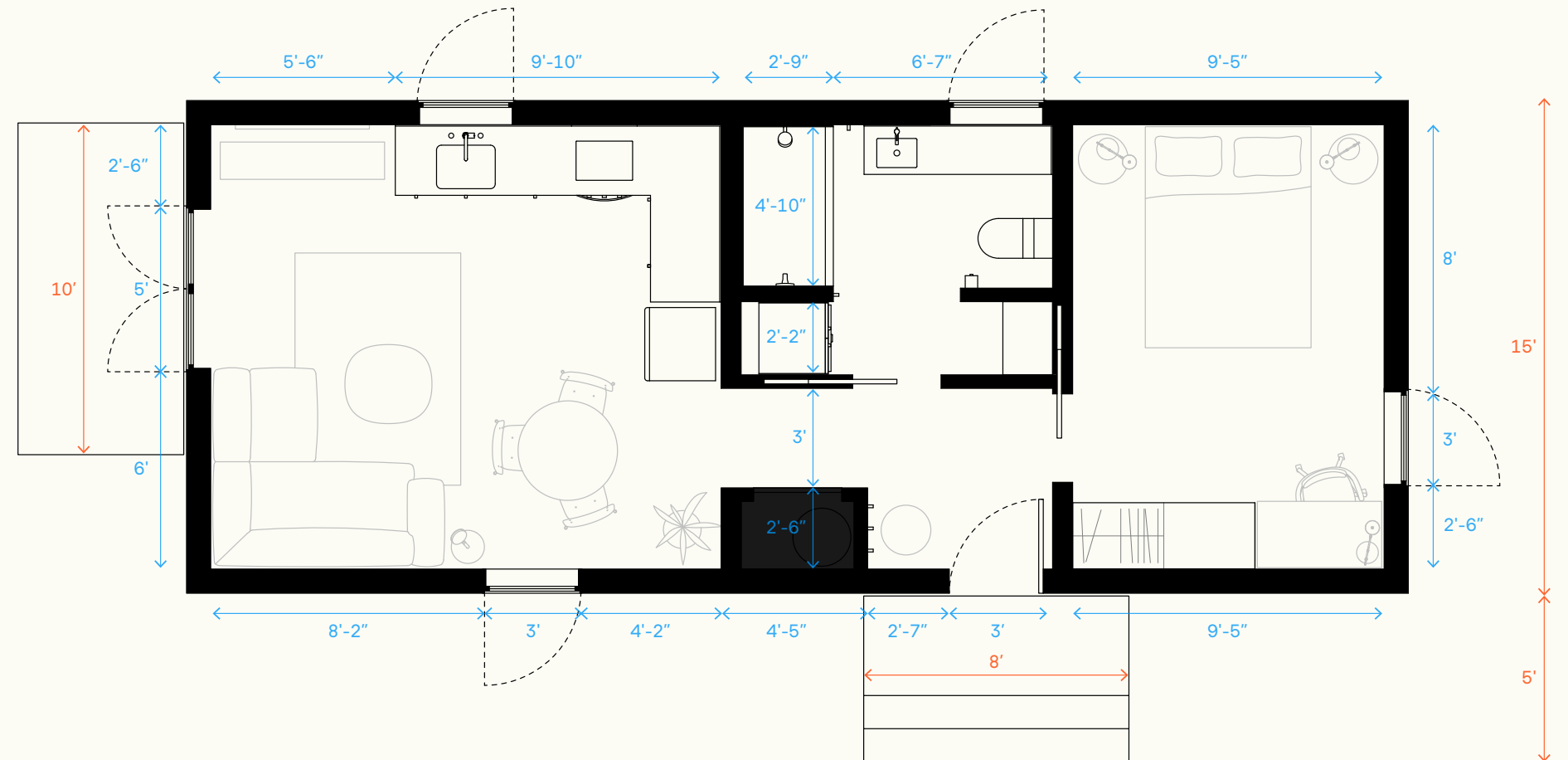
## Interior dimensions ↔

Living room: 15'-5" x 13'-6"

Bedroom: 9'-5" x 13'-6"

Bathroom: 9'-4" x 7'-6"

Dimensions subject to change without notice



# One bedroom Layout 1B-03

## Configuration

- Front double doors and deck
- Left side casement window

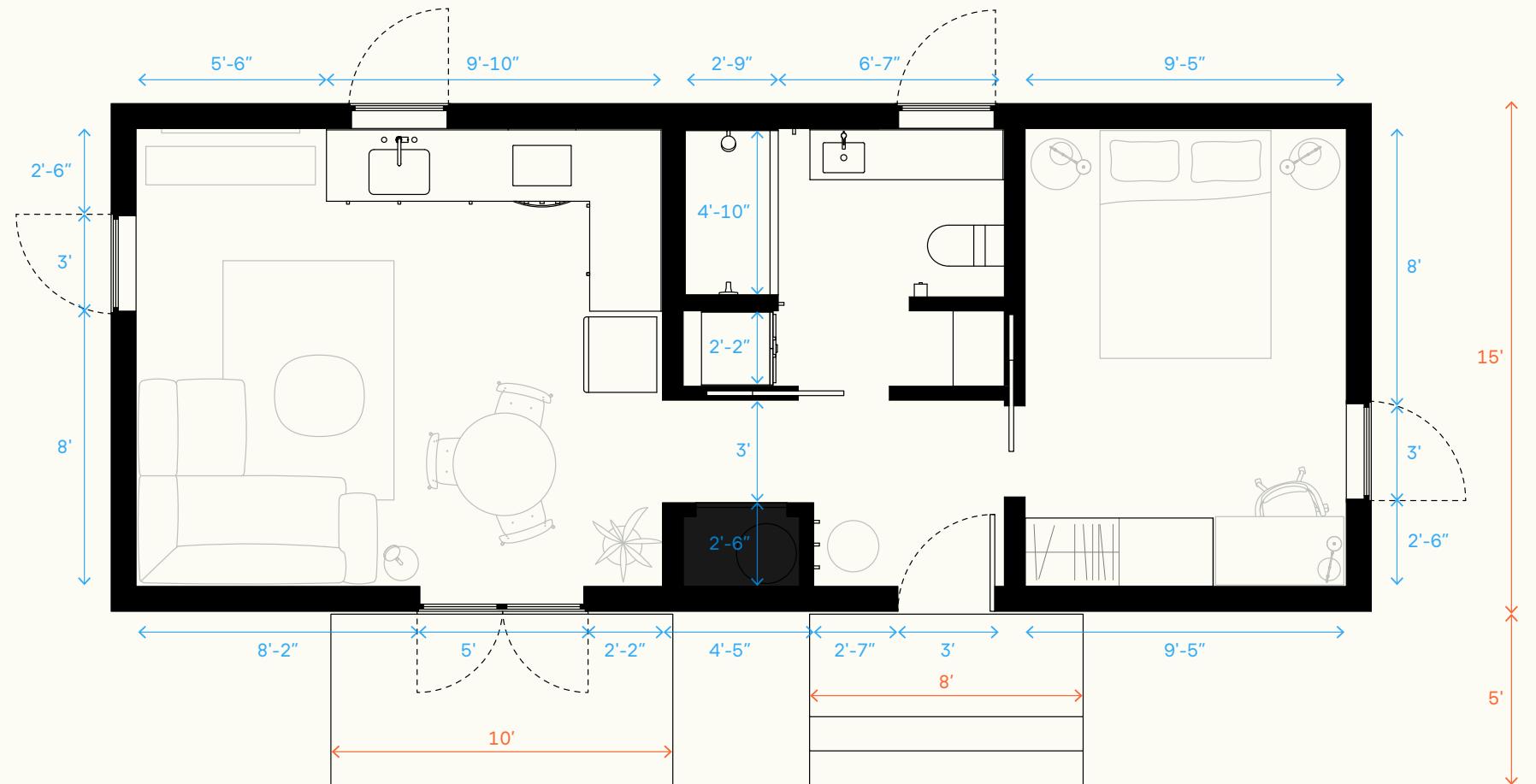
## Exterior dimensions ↔

Total footprint (incl. decks): 37' x 20'  
 Minimum lot size: 47' x 30'

## Interior dimensions ↔

Living room: 15'-5" x 13'-6"  
 Bedroom: 9'-5" x 13'-6"  
 Bathroom: 9'-4" x 7'-6"

Dimensions subject to change without notice



# One bedroom Layout 1B-04

## Configuration

- Front double doors and deck
- Left side double doors and deck

## Exterior dimensions ↔

Total footprint (incl. decks): 42' x 20'

Minimum lot size: 52' x 30'

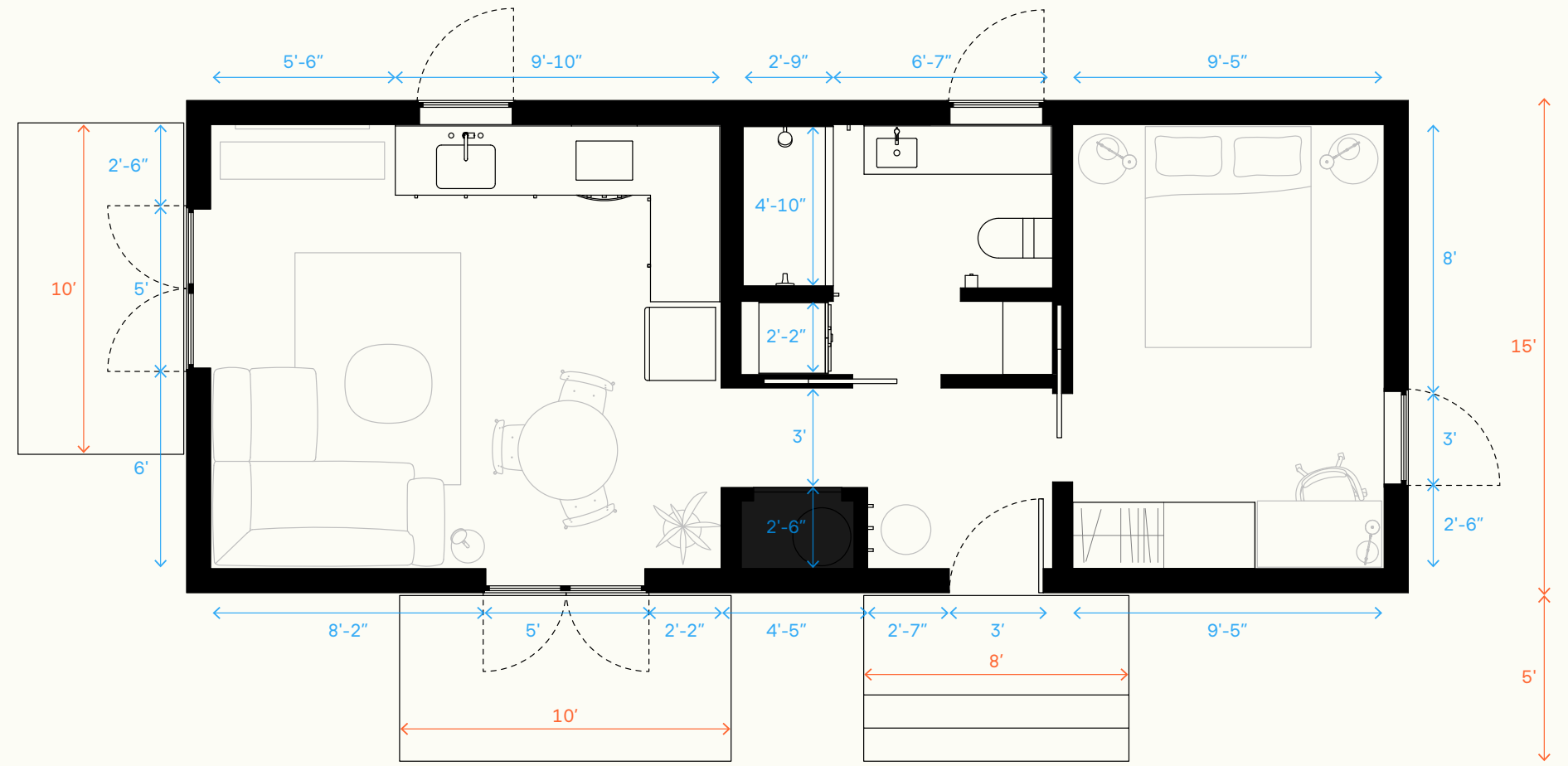
## Interior dimensions ↔

Living room: 15'-5" x 13'-6"

Bedroom: 9'-5" x 13'-6"

Bathroom: 9'-4" x 7'-6"

Dimensions subject to change without notice





# Two bedroom



# Two bedroom

Layout 2B-01

## Configuration

- Front casement window
- Left side casement window

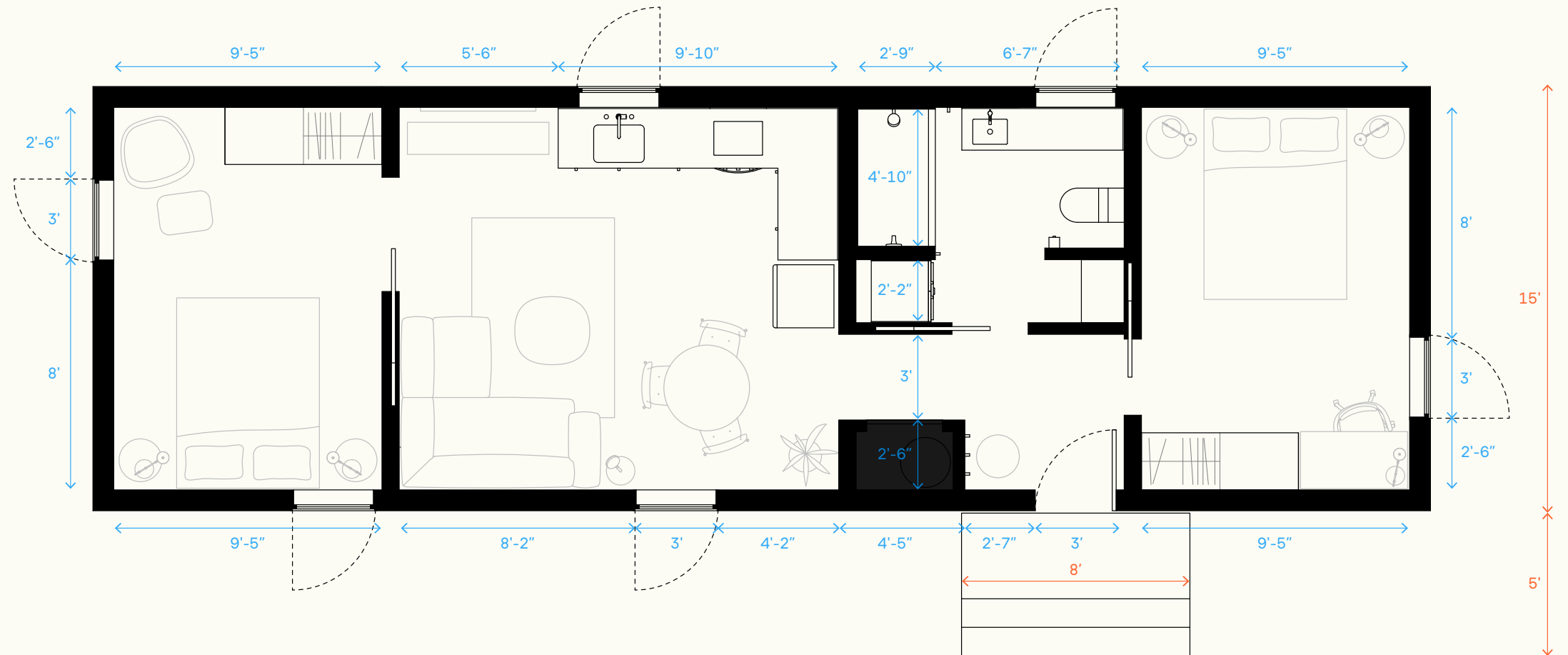
## Exterior dimensions ↔

Total footprint (incl. decks): 47' x 20'  
Minimum lot size: 57' x 30'

## Interior dimensions ↔

Living room: 15'-5" x 13'-6"  
Bedrooms: 9'-5" x 13'-6"  
Bathroom: 9'-4" x 7'-6"

Dimensions subject to change without notice





# Two bedroom Layout 2B-02

## Configuration

- Front casement window
- Left side double doors and deck

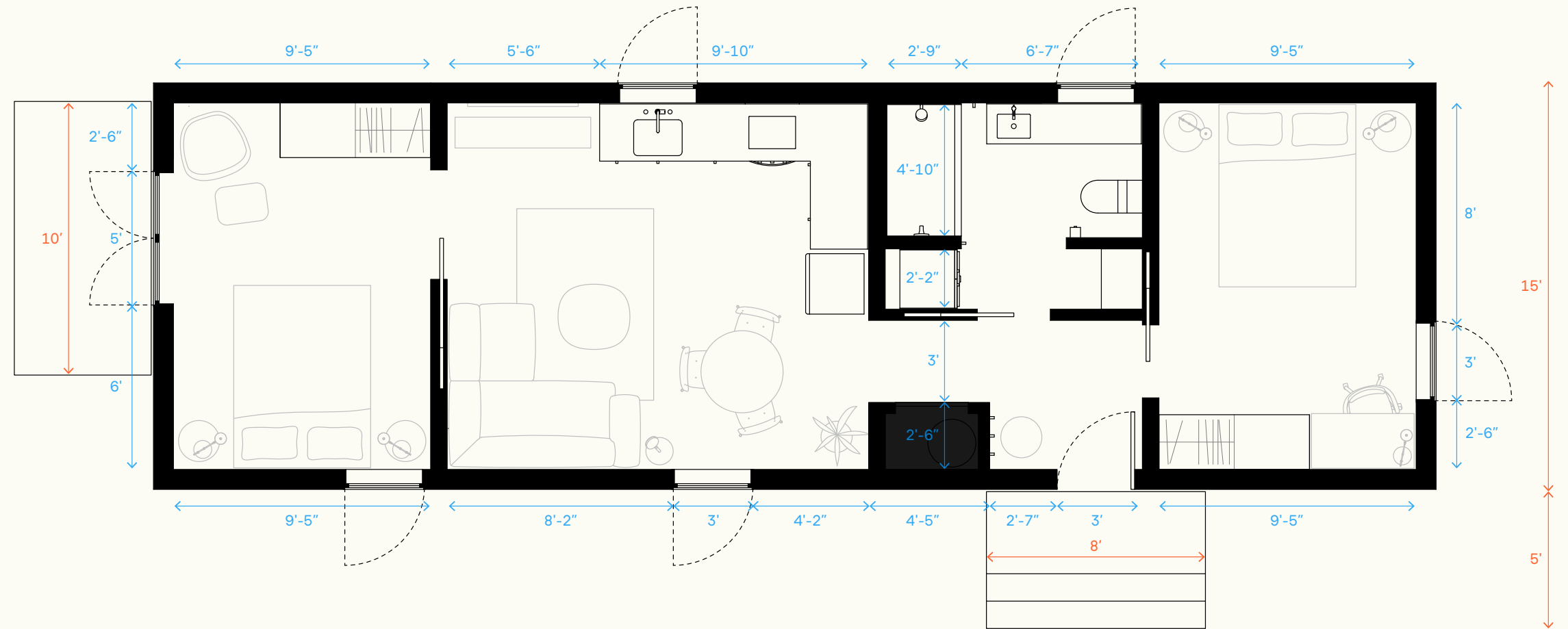
## Exterior dimensions ↔

Total footprint (incl. decks): 52' x 20'  
 Minimum lot size: 62' x 30'

## Interior dimensions ↔

Living room: 15'-5" x 13'-6"  
 Bedrooms: 9'-5" x 13'-6"  
 Bathroom: 9'-4" x 7'-6"

Dimensions subject to change without notice



# Two bedroom Layout 2B-03

## Configuration

- Front double doors and deck
- Left side casement window

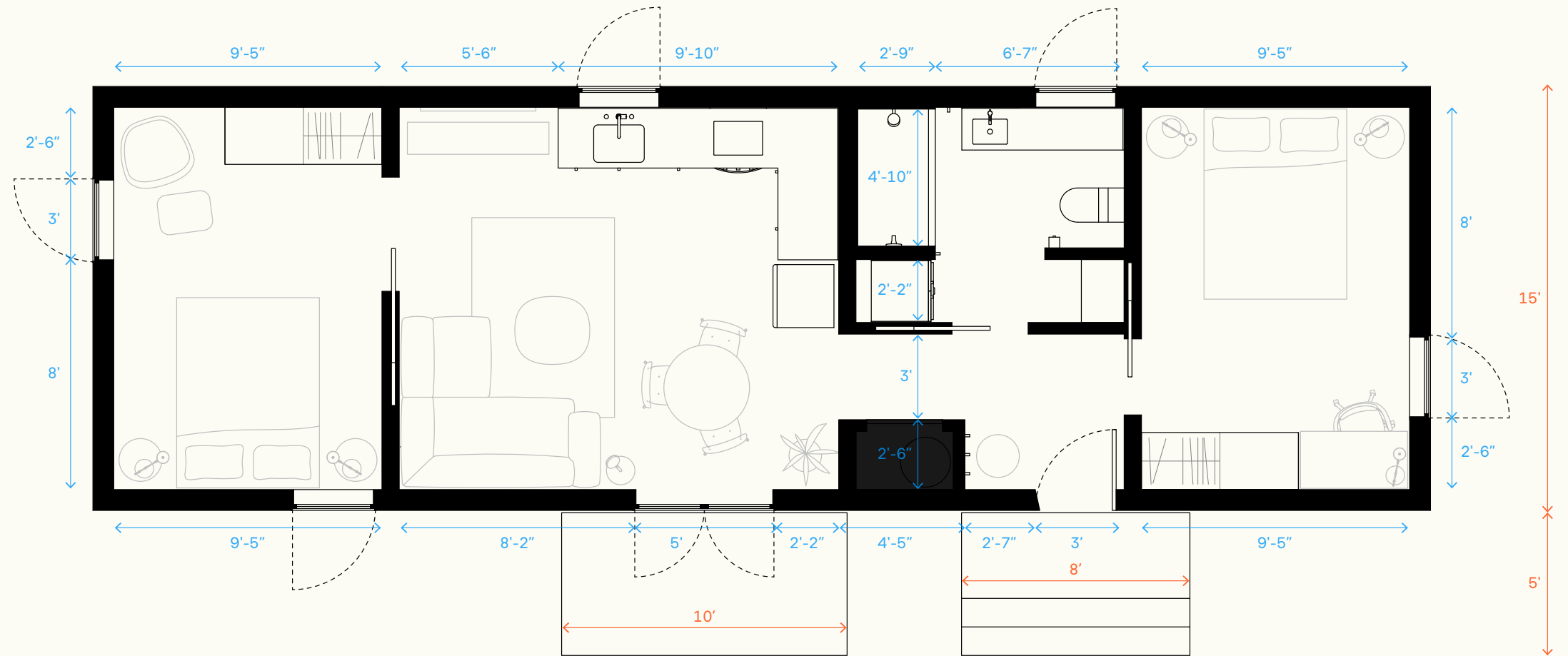
## Exterior dimensions ↔

Total footprint (incl. decks): 47' x 20'  
 Minimum lot size: 57' x 30'

## Interior dimensions ↔

Living room: 15'-5" x 13'-6"  
 Bedrooms: 9'-5" x 13'-6"  
 Bathroom: 9'-4" x 7'-6"

Dimensions subject to change without notice



# Two bedroom Layout 2B-04

## Configuration

- Front double doors and deck
- Left side double doors and deck

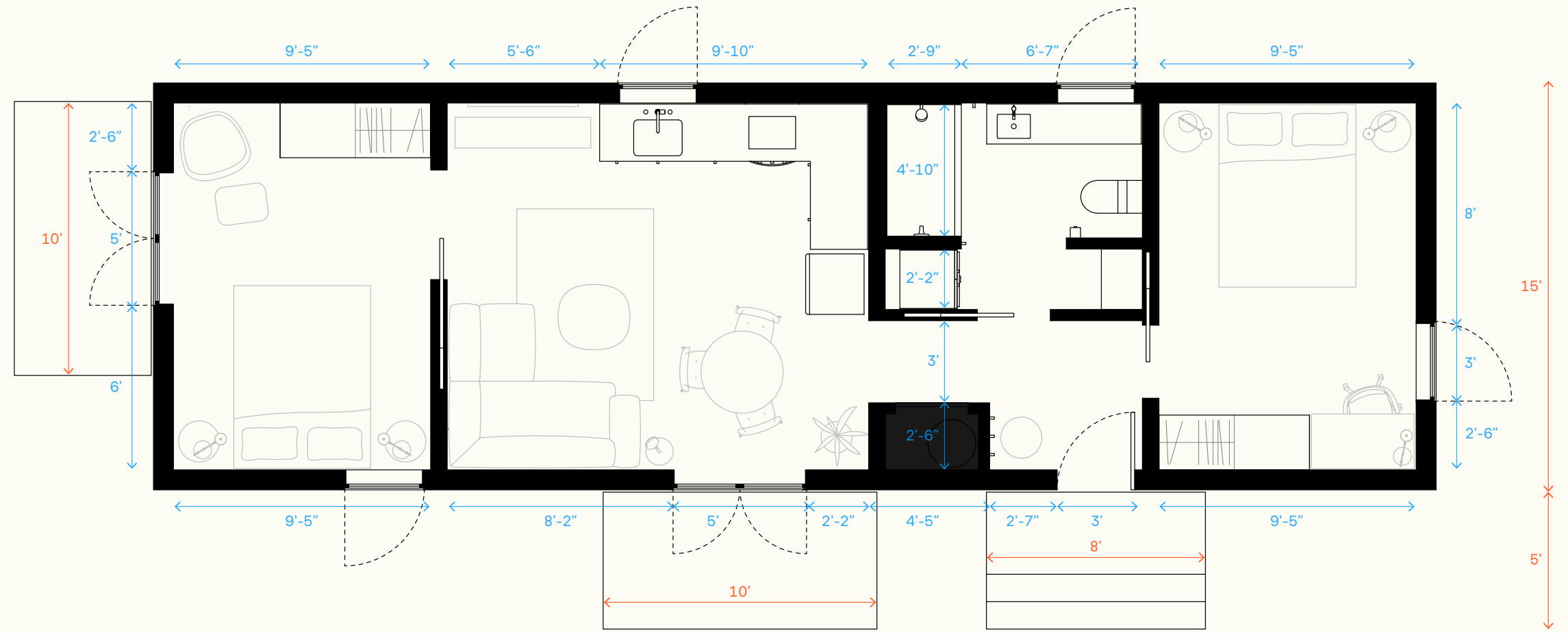
## Exterior dimensions ↔

Total footprint (incl. decks): 52' x 20'  
 Minimum lot size: 62' x 30'

## Interior dimensions ↔

Living room: 15'-5" x 13'-6"  
 Bedrooms: 9'-5" x 13'-6"  
 Bathroom: 9'-4" x 7'-6"

Dimensions subject to change without notice



Samara